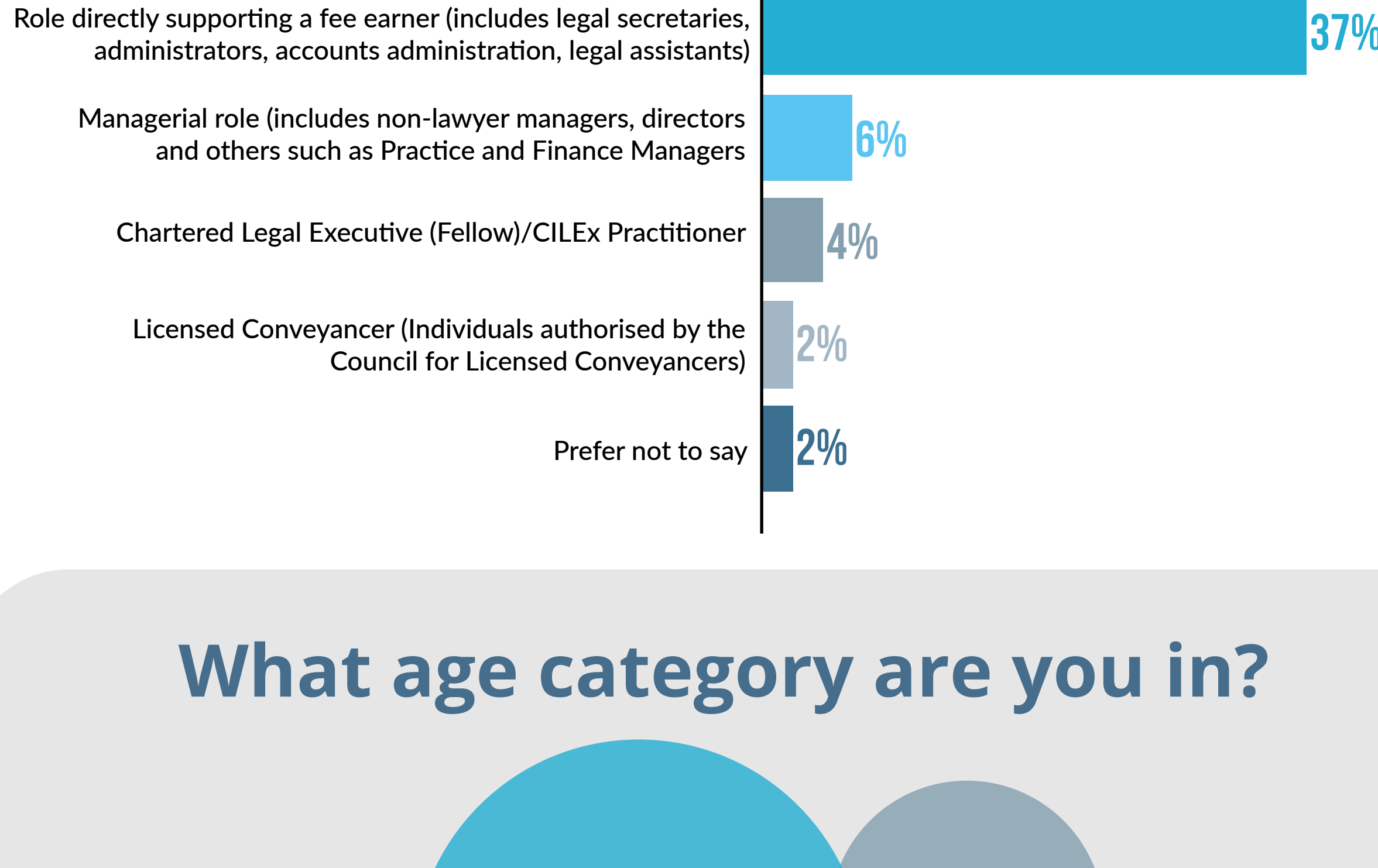


2023

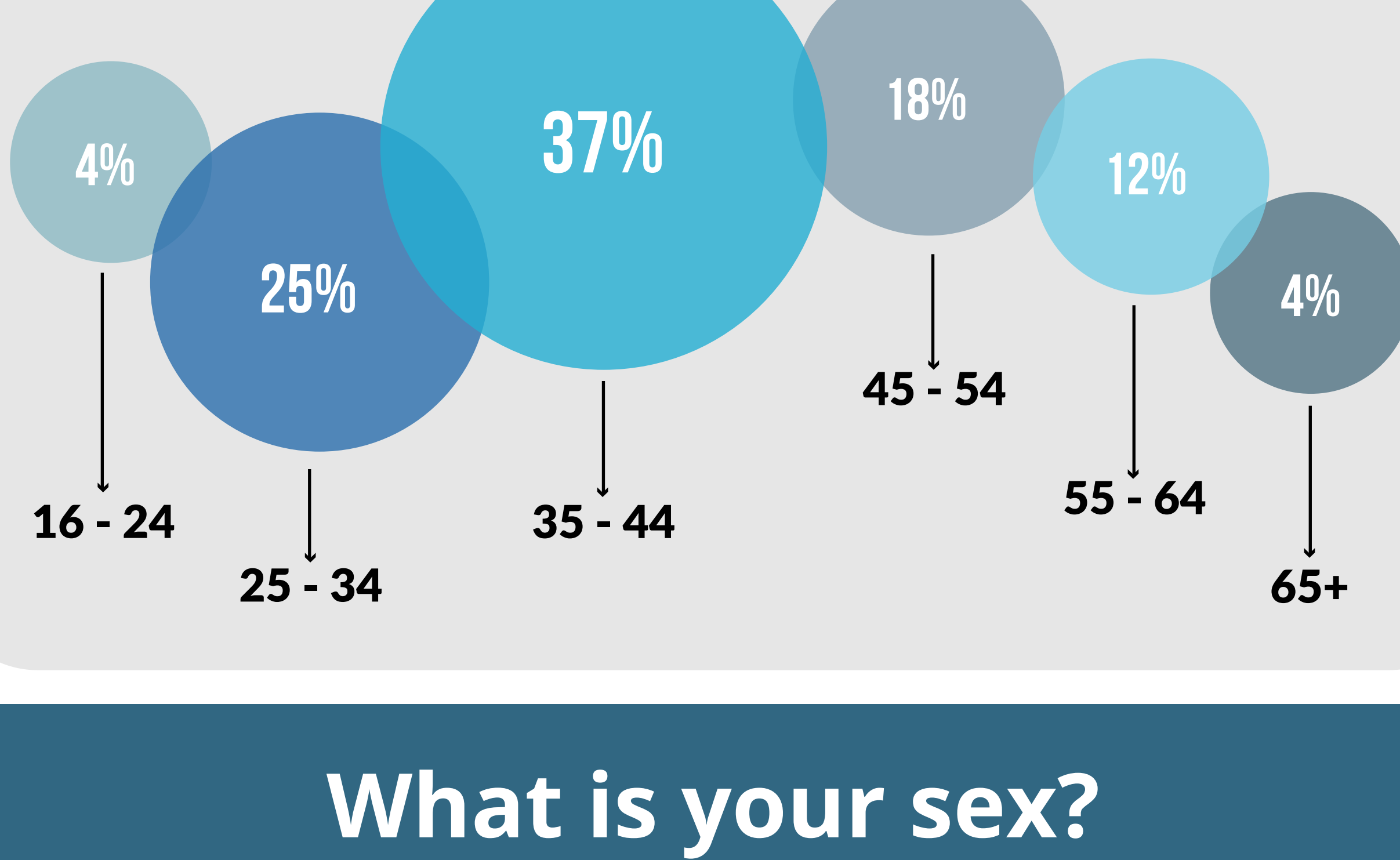
SRA Diversity Questionnaire



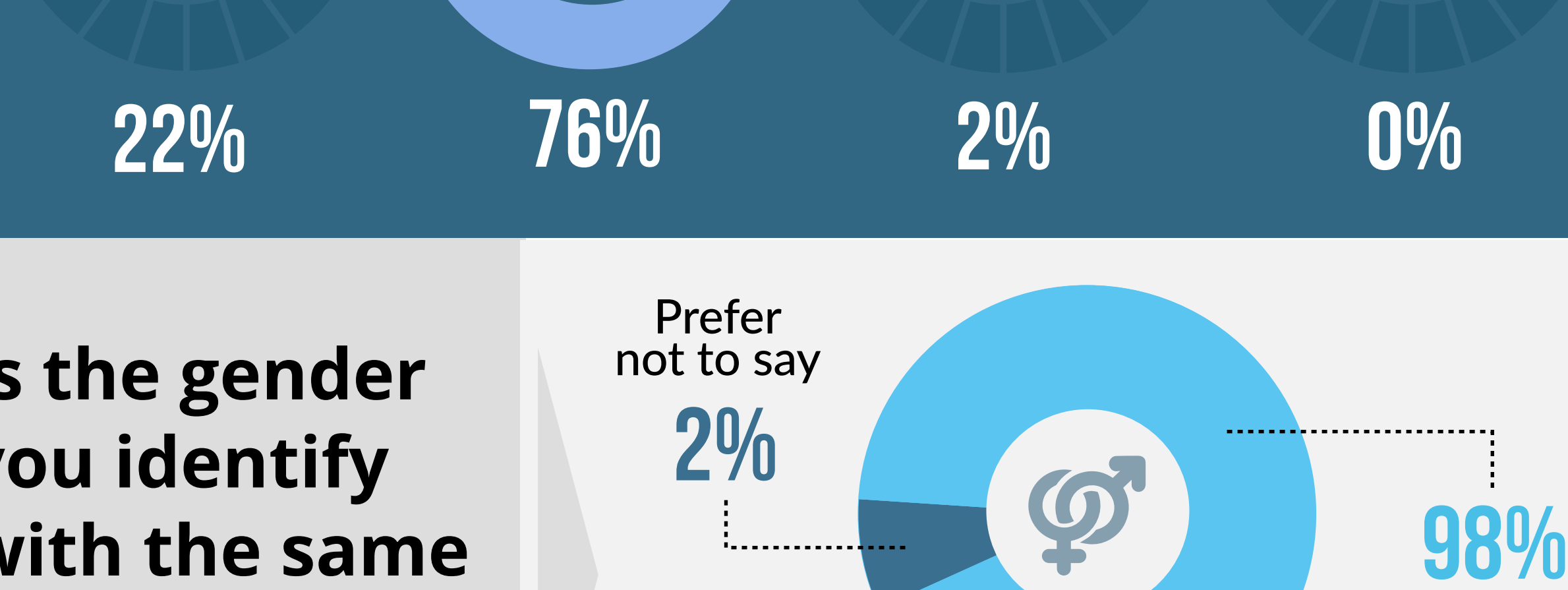
Select one category which best describes your role in the firm



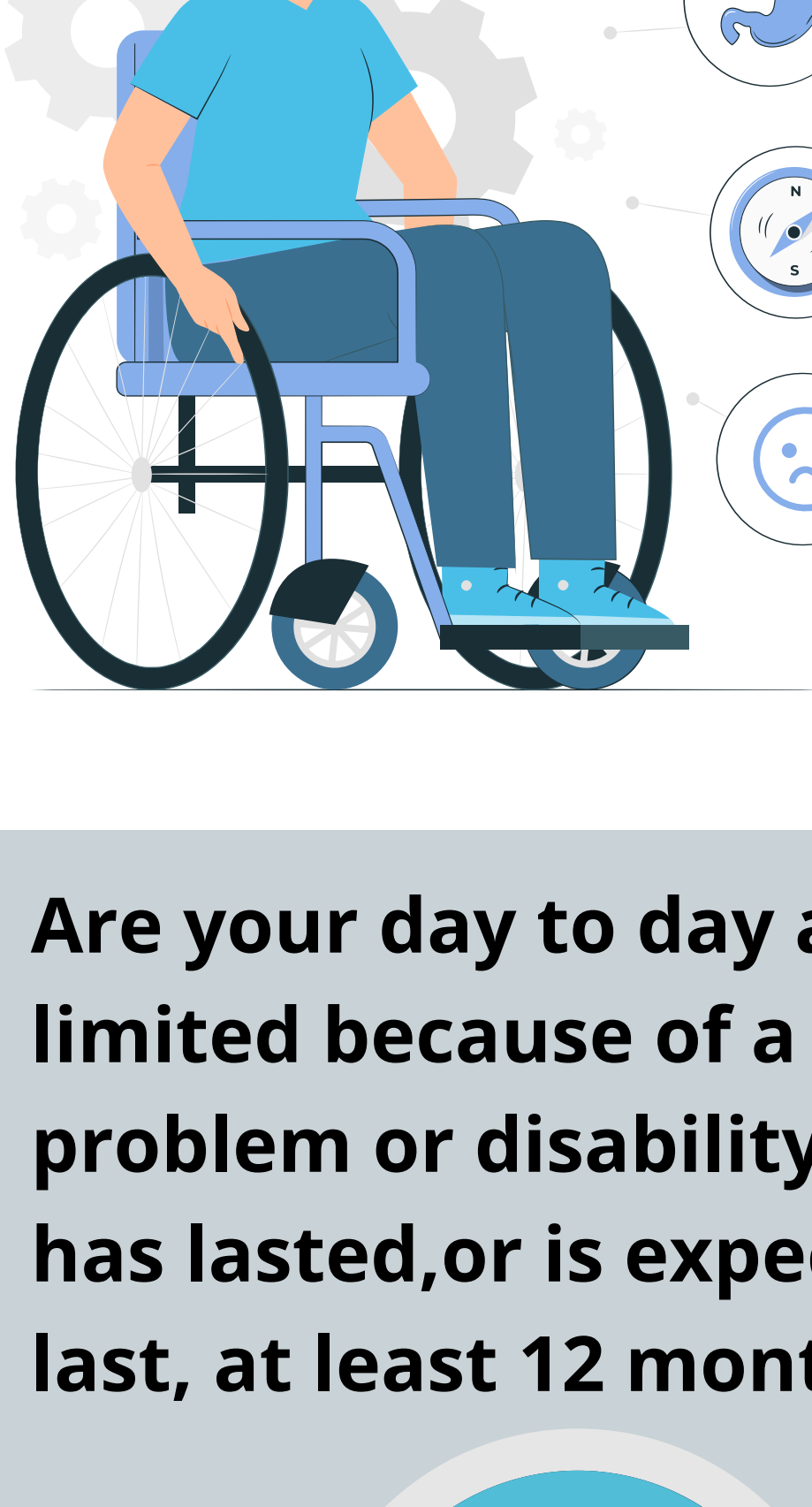
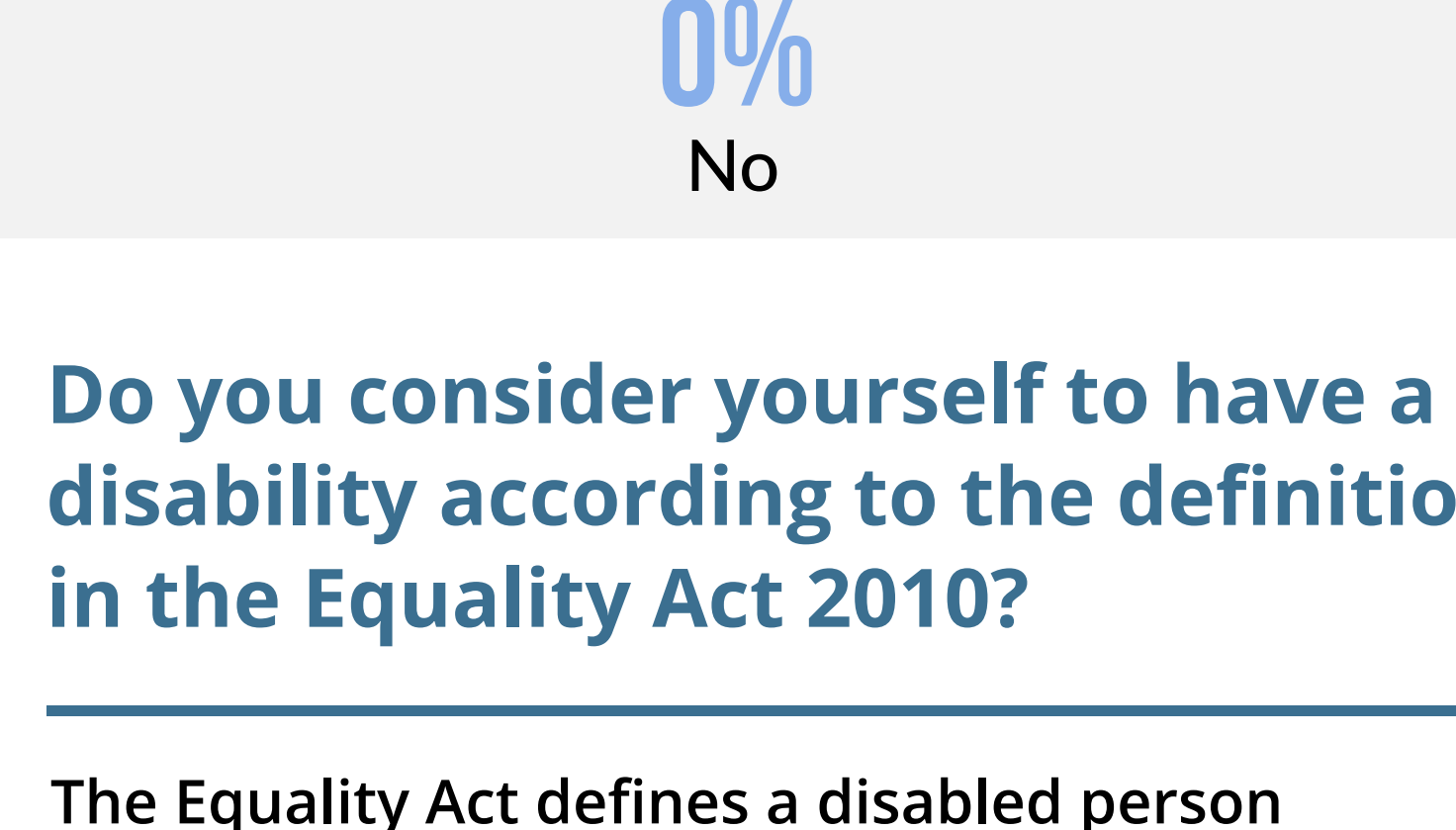
What age category are you in?



What is your sex?



Is the gender you identify with the same as your sex registered at birth?

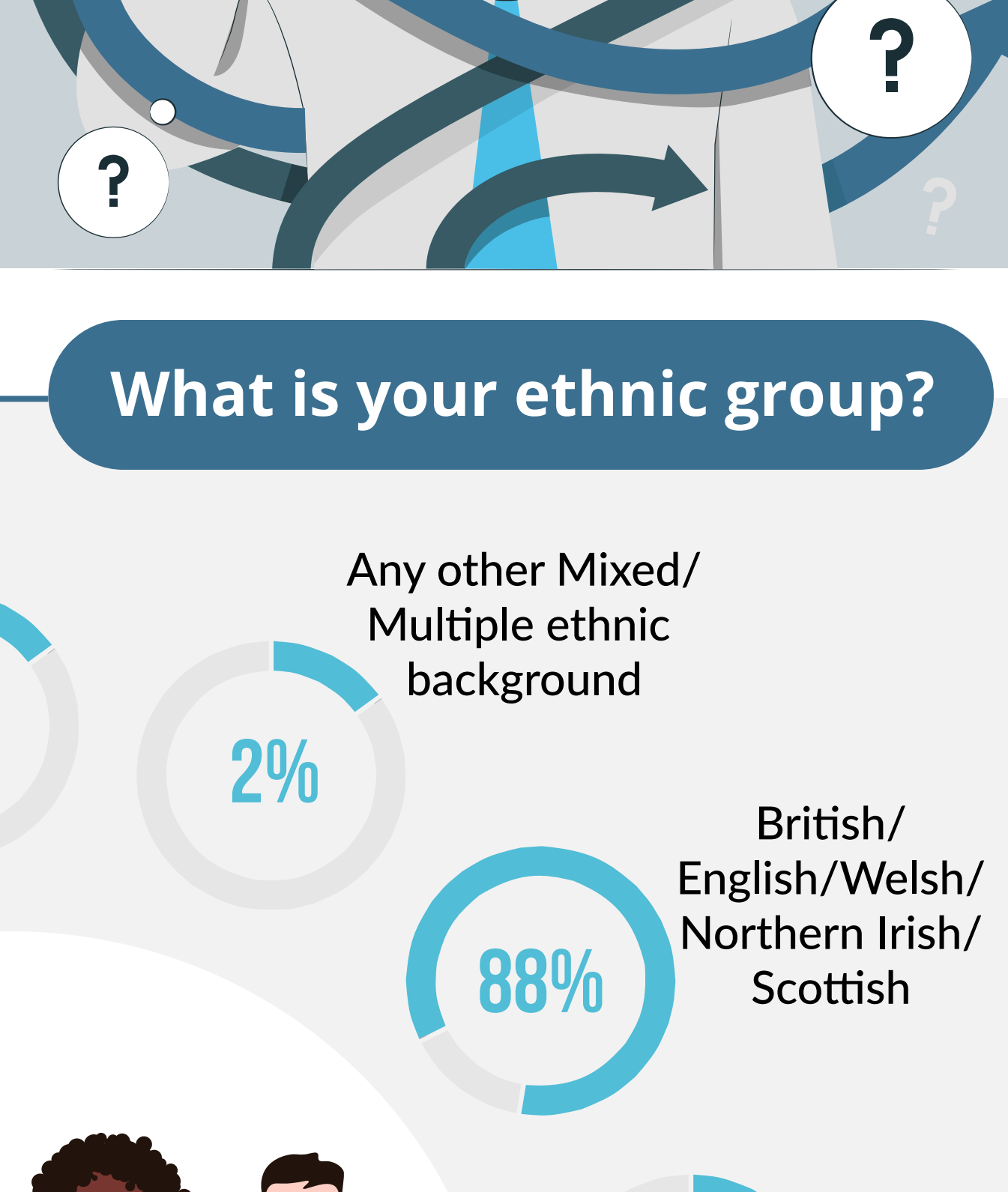
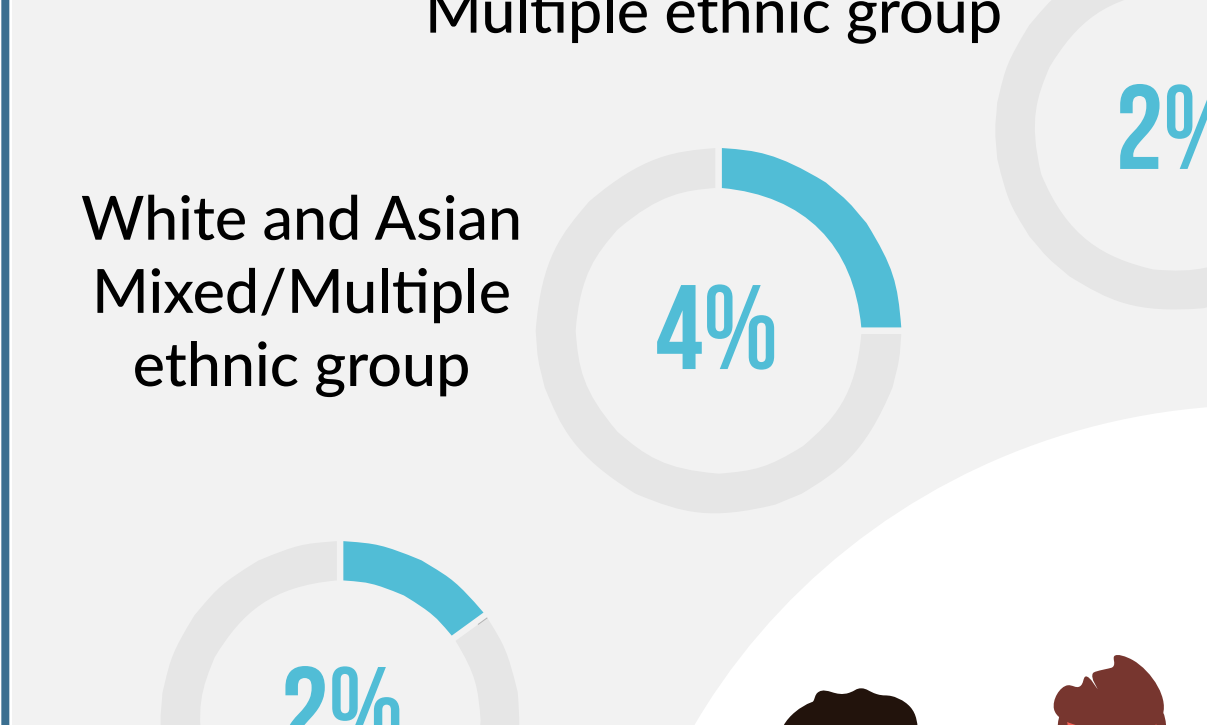


Do you consider yourself to have a disability according to the definition in the Equality Act 2010?

The Equality Act defines a disabled person as someone who has a mental or physical impairment that has a substantial and long-term adverse effect on the person's ability to carry out normal day-to-day activities.



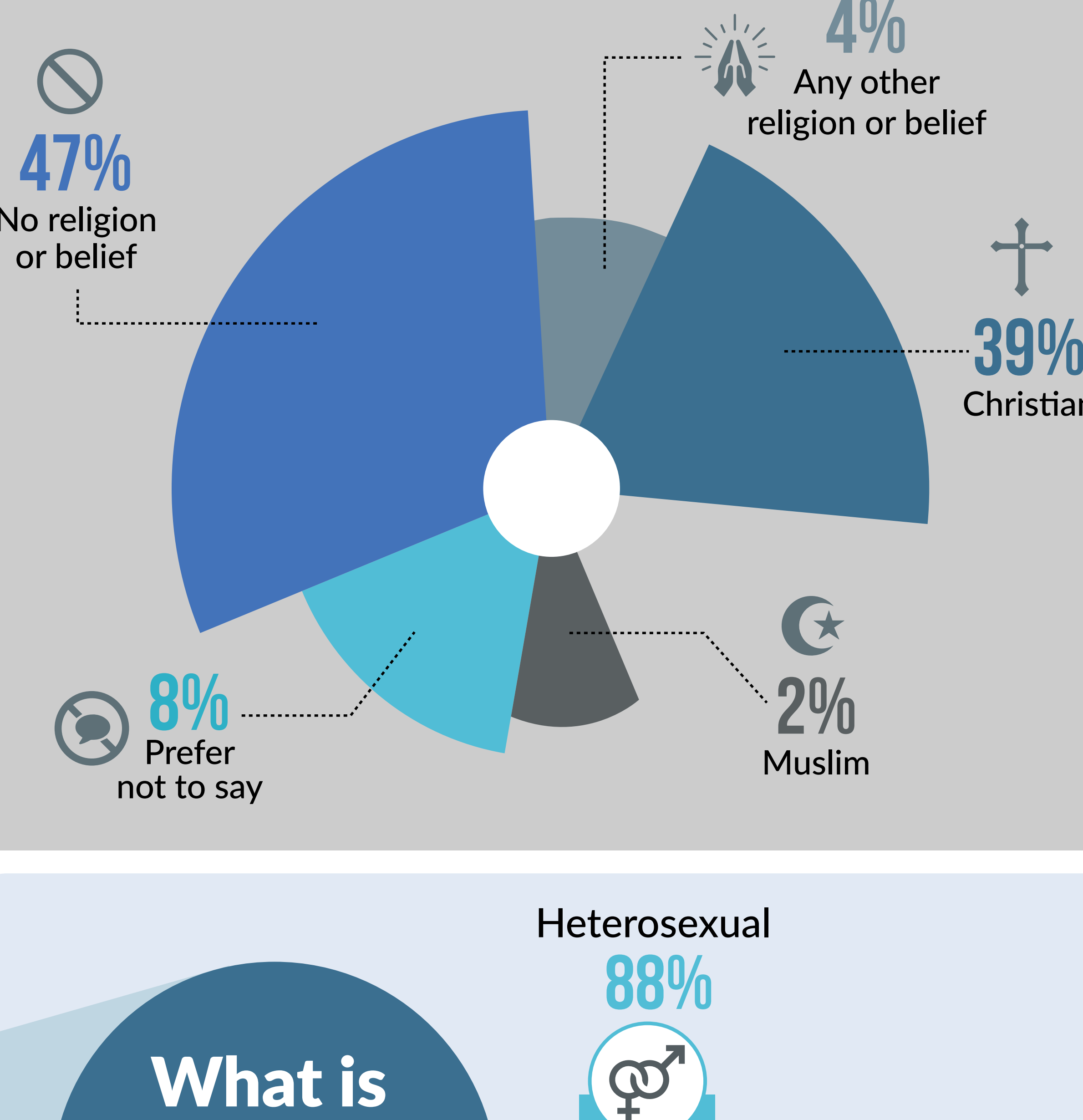
Are your day to day activities limited because of a health problem or disability which has lasted, or is expected to last, at least 12 months?



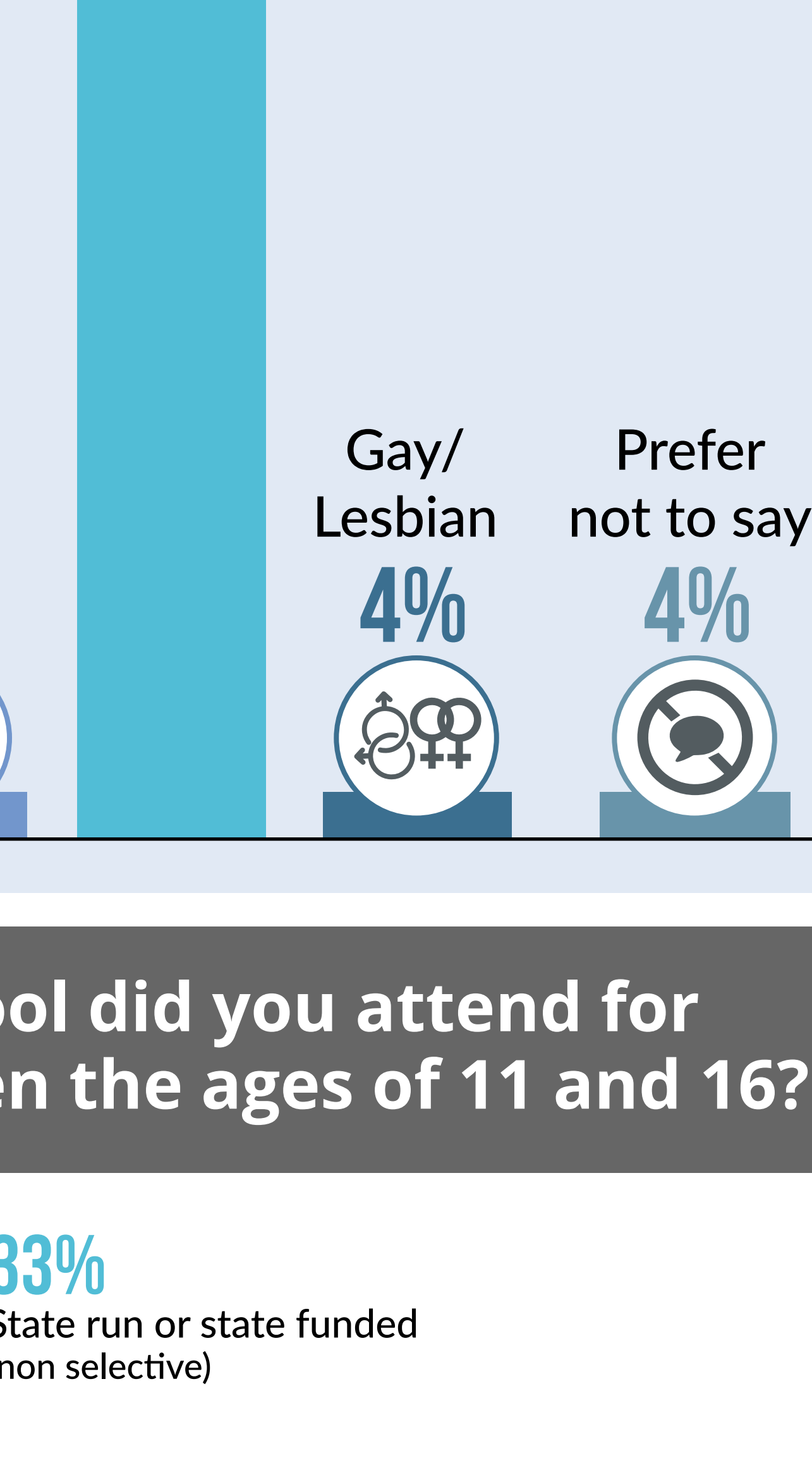
What is your ethnic group?



What is your religion or belief?



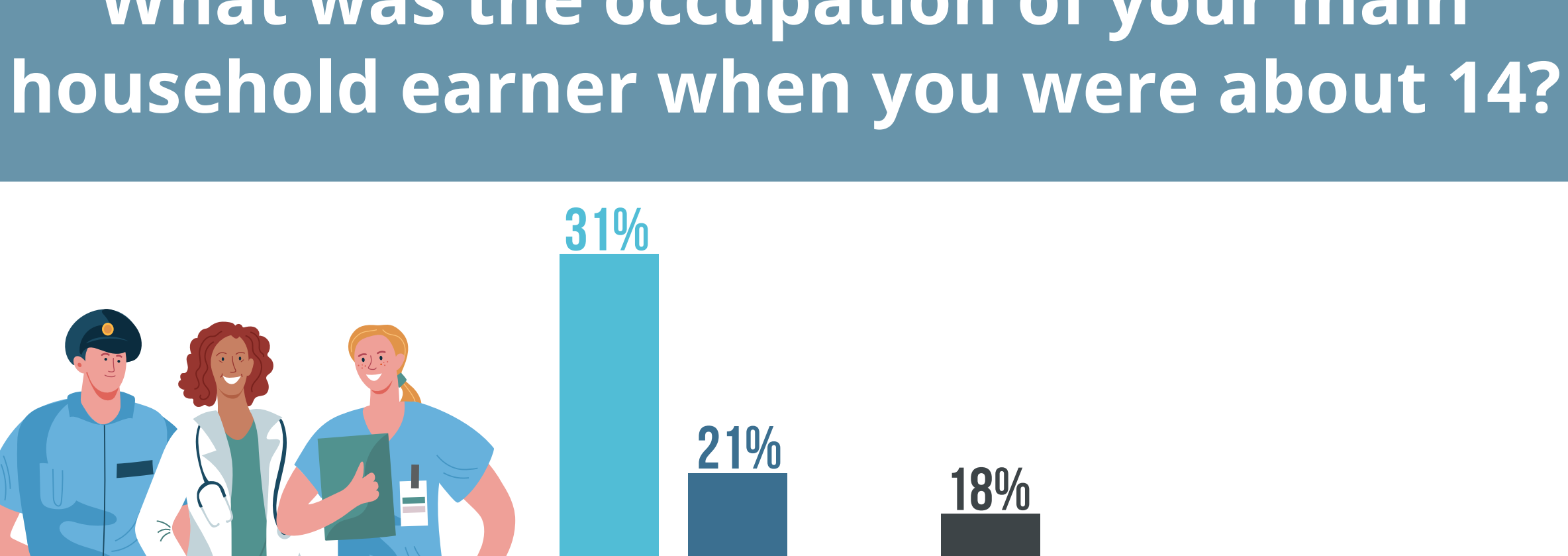
What is your sexual orientation?



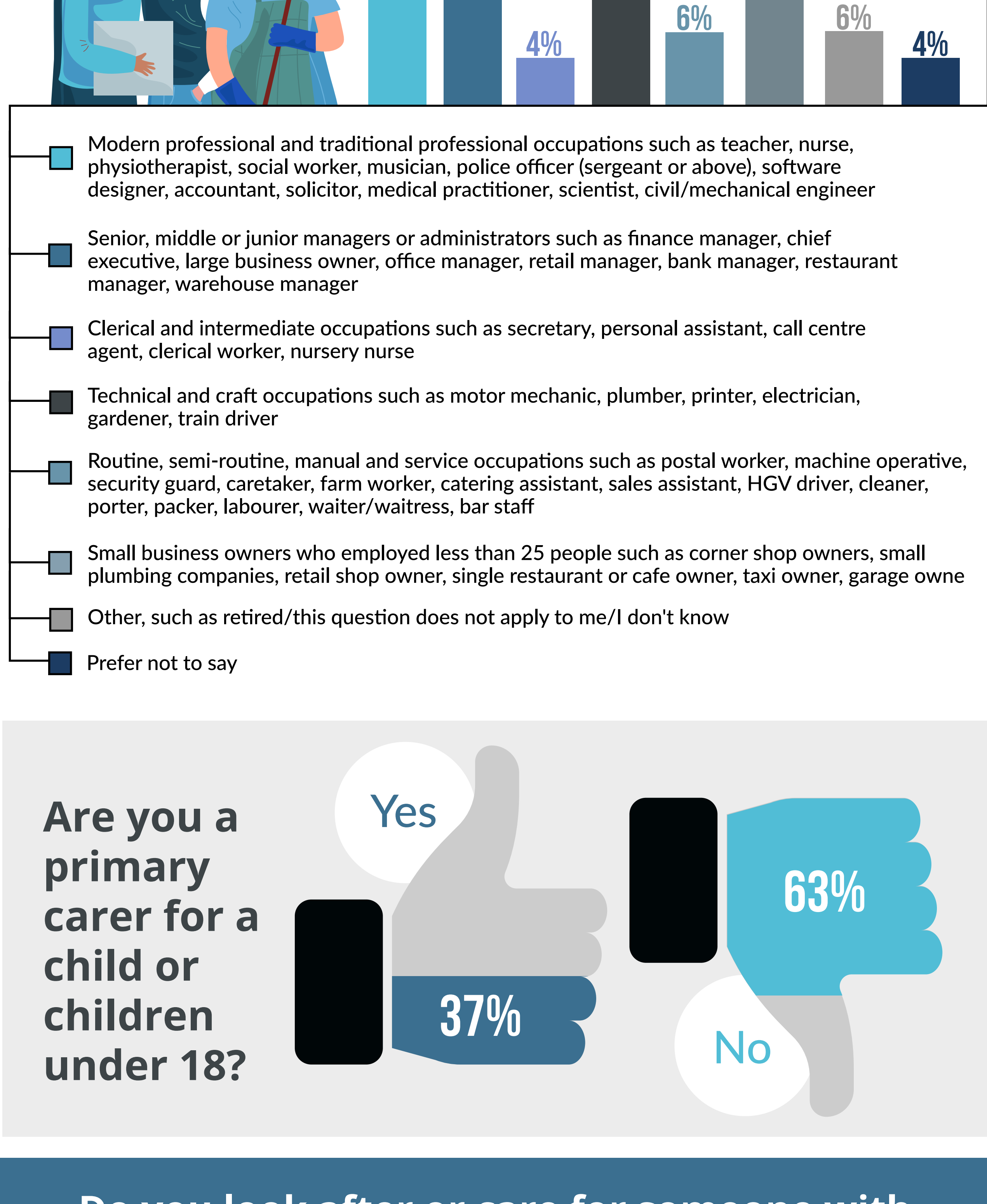
Which type of school did you attend for the most time between the ages of 11 and 16?



Did either of your parents attend university and gain a degree (eg BA/BSc or equivalent) by the time you were 18?



What was the occupation of your main household earner when you were about 14?



Are you a primary carer for a child or children under 18?



Do you look after or care for someone with long-term physical or mental ill health caused by disability or age (not in a paid capacity)?

